

THE RTG MODERN BLOCK



**RETAINING
TECHNOLOGIES**
▪ GROUP ▪





The RTG Modern Block

Drawing on decades of structural design, engineering and construction experience, the Retaining Technologies Group (RTG) has created the *RTG Modern Block* – a pre-cast concrete, modular block retaining wall system that is bold both in its design capability and contemporary styling.

Suitable for both Mass Gravity & Mechanically Stabilized Earth (MSE) Retaining Walls, the RTG Modern Block's versatile 'hollow core' characteristic also allows for the integration of anchoring systems and micropile solutions.

BOLD by Design
DISTINCTIVE in Style

Thoroughly MODERN



With its contemporary styling, *The RTG Modern Block* enhances modern landscape architecture & artistic design, creating a bold, sophisticated finish to residential, commercial and civil projects. Clients can choose from our aesthetically pleasing profile designs and textures or discuss their own bespoke design ideas.

The RTG Modern Block can be installed either vertically or offset to create a stepped terrace effect. For a seamless finish, projects can be completed using the specially designed capping blocks, or alternatively use *The RTG Modern Block* as a decorative planter feature for an attractive landscaping design option.

For projects requiring additional privacy fencing or traffic barriers, fencing can be constructed on top of *The RTG Modern Block* with posts either being bolted to the capping block or posts being integrated and fixed into the central hollow core.



Profile 1



Profile 2



Bespoke Client Logo Design

BOLD by Design

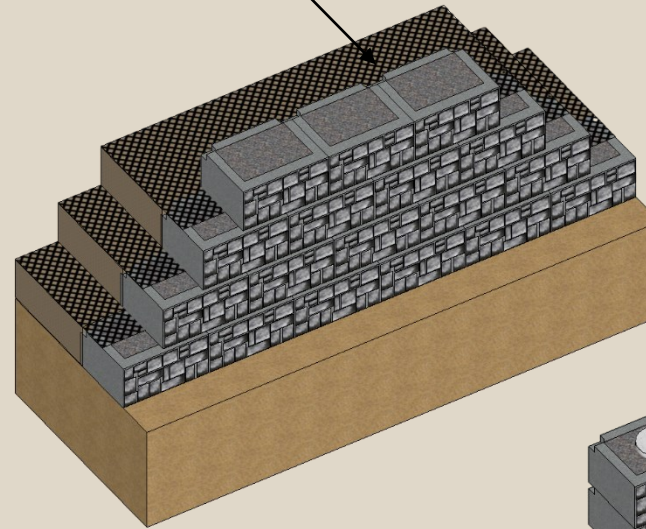
Why Choose the RTG Modern Block?

- ▶ Designed & Manufactured in Australia
- ▶ Multiple Attractive Facing Textures
- ▶ Positive Interlocking Connection
- ▶ Rapid & 'Constructable' Installation
- ▶ Lightweight
- ▶ Sustainable Solution

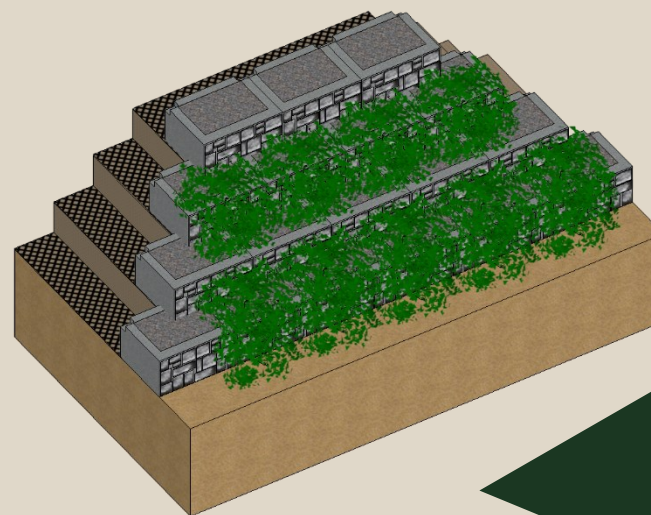
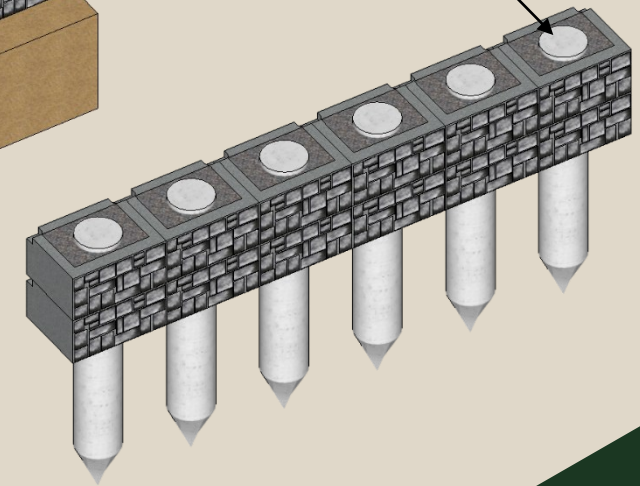
Retaining Wall Applications

- ▶ Mass Gravity
- ▶ Mechanically Stabilised Earth (MSE)
- ▶ Anchored
- ▶ Micro-piled

GEOGRID REINFORCEMENT



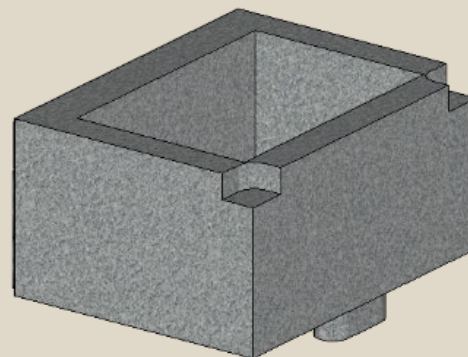
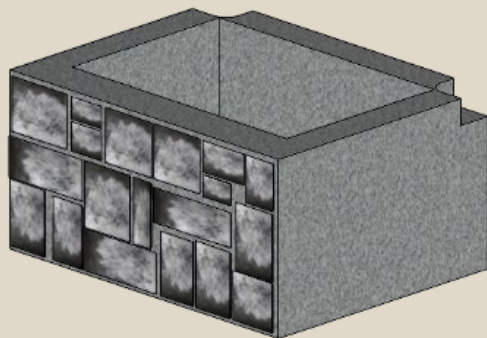
CONCRETE MICROPILES



**ENGINEERED
to Australian
Standards**

The RTG Modern Block Specifications

Description	Dimensions	Specifications
Outside Dimensions	L1000mm x W750mm x H500mm	-
Interior Dimensions	L800mm x W550mm x H500mm	-
Thickness	100mm (± 5mm)	-
Minimum Cover	45mm	AS 5100.5, TABLE 4.10.3(B)
Design Life	Up to 100 Years	DTMR GDS CLAUSE 1K
Concrete Compressive Strength	40MPa	AS 5100.5, TABLE 4.5
Minimum Slump	80 – 180	MRTS70, TABLE 9.4(a)
Exposure Classification	B2	AS 5100.5, TABLE 4.3
Geometric Sizing of Base (0.7h)	750mm	AS 4678-2002 CL. J8



**Up to 100 Years
 Design Life**

Thoroughly CONSTRUCTABLE



‘Construction Friendly’

The RTG Modern Block’s positive, inter-locking connection allows for quick and easy installation; thus, providing valuable cost savings in both time and money through reduced labour requirement.

The RTG Modern Block is lightweight in comparison to solid blocks and other similar competitor systems. This reduces transport costs, and the need for robust plant hire and earth moving equipment.

**Use in Temporary or
Permanent Works**

Thoroughly SUSTAINABLE



The Modern Block's 'hollow core' characteristic is fundamental in enabling its suitability for a range of applications, and in making it an environmentally sustainable construction solution.

Where the design permits, onsite (insitu) material can be utilised to backfill the central void, thus reducing the amount of imported and exported material from the construction site.

**Civil, Commercial &
Residential Projects**



**RETAINING
TECHNOLOGIES**
▪ G R O U P ▪

07 3868 9663

www.retainingtechgroup.com